

PARTNERSHIPS

IN THE

CITICO CREEK DAM REMOVAL

TENNESSEE COLDWATER SUMMIT

1/31/2026

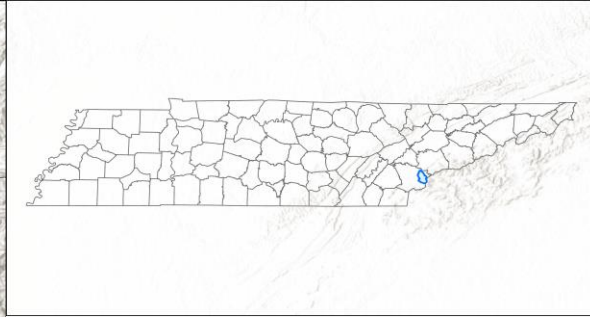
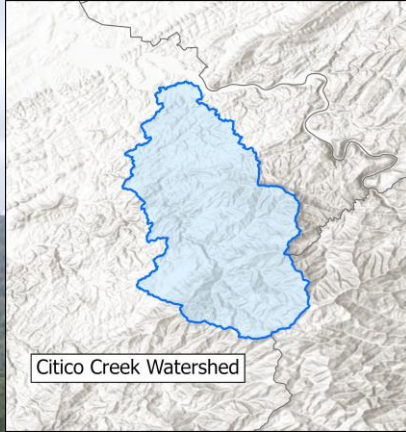
Lucas Curry

Watershed Restoration Engineer

The Nature Conservancy

The Nature
Conservancy 

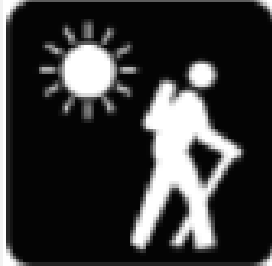
Protecting nature. Preserving life.



CITICO CREEK BACKGROUND

- 55 miles/1.5 hours from Knoxville
- 71 square miles
- >90% in Cherokee National Forest

WHY DOES EVERYONE WANT TO WORK IN CITICO CREEK?



WHY DOES EVERYONE WANT TO WORK IN CITICO CREEK?



Hellbender



Yellowfin Madtom (T)



Brook Trout

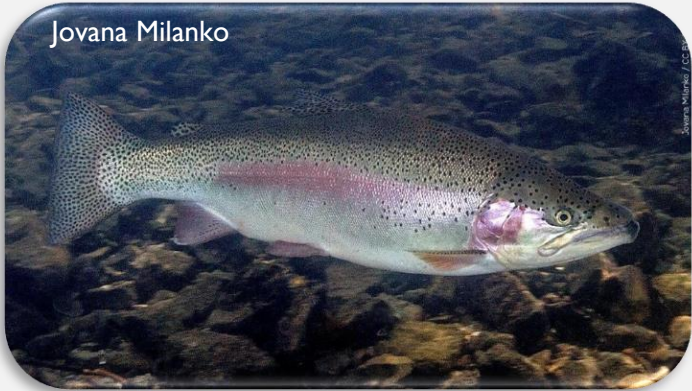


Citico Darter (E)



Smoky Madtom (E)

*As
well
as...*



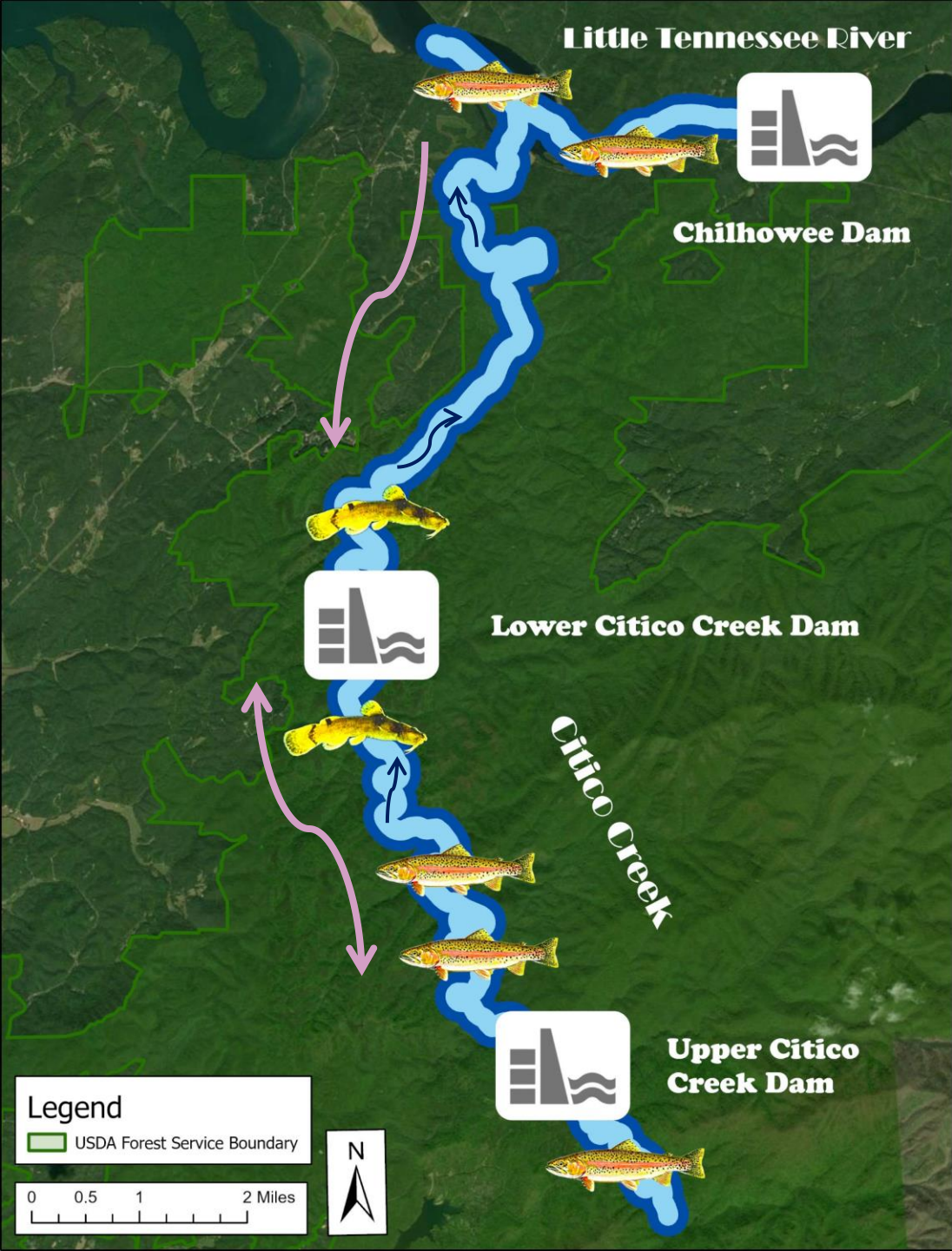
Rainbow Trout

ONCE UPON A TIME...

- Installed in early 1970s by USFS to keep native and lake fish, from Tellico Reservoir, out of the Citico Creek trout fishery

WHEREAS, Citico Creek supports a valuable trout fishery year-round for about five miles below the present barrier near Double Camp Creek, and

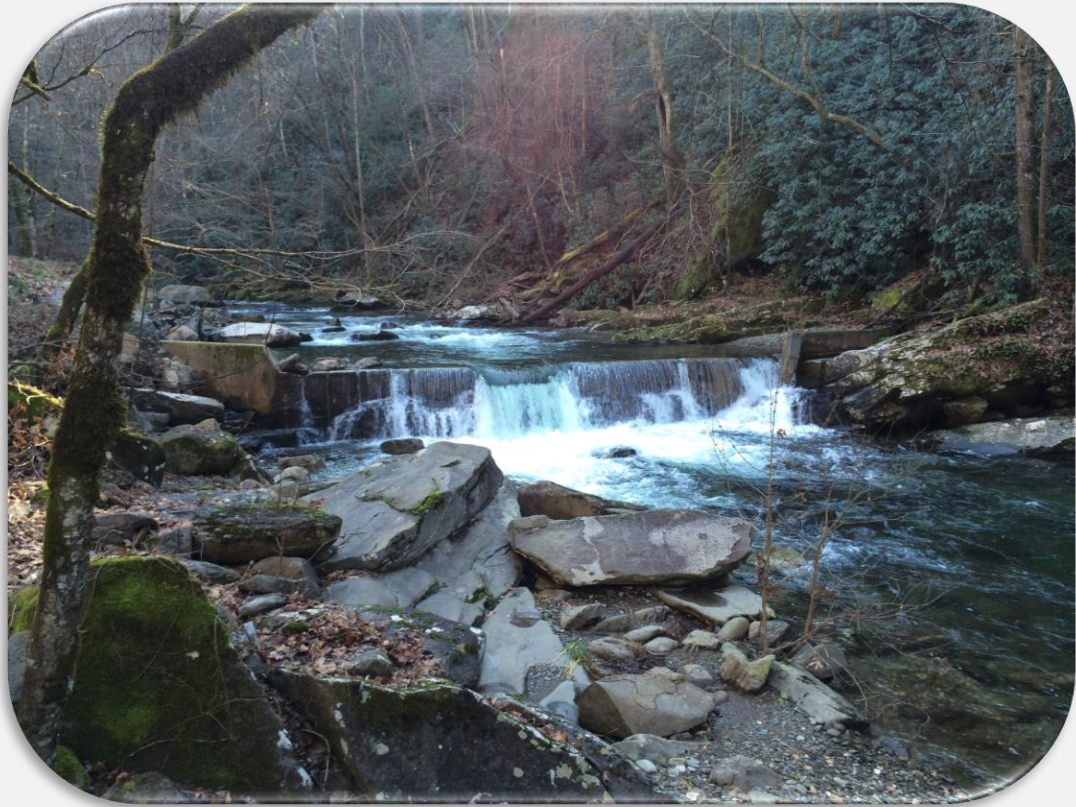
WHEREAS, both TVA and the U. S. Forest Service wish to protect this five mile section of Citico Creek from runs of competitory and predatory fish (shad, white bass, suckers, buffalo, carp, etc.), from the new lake.



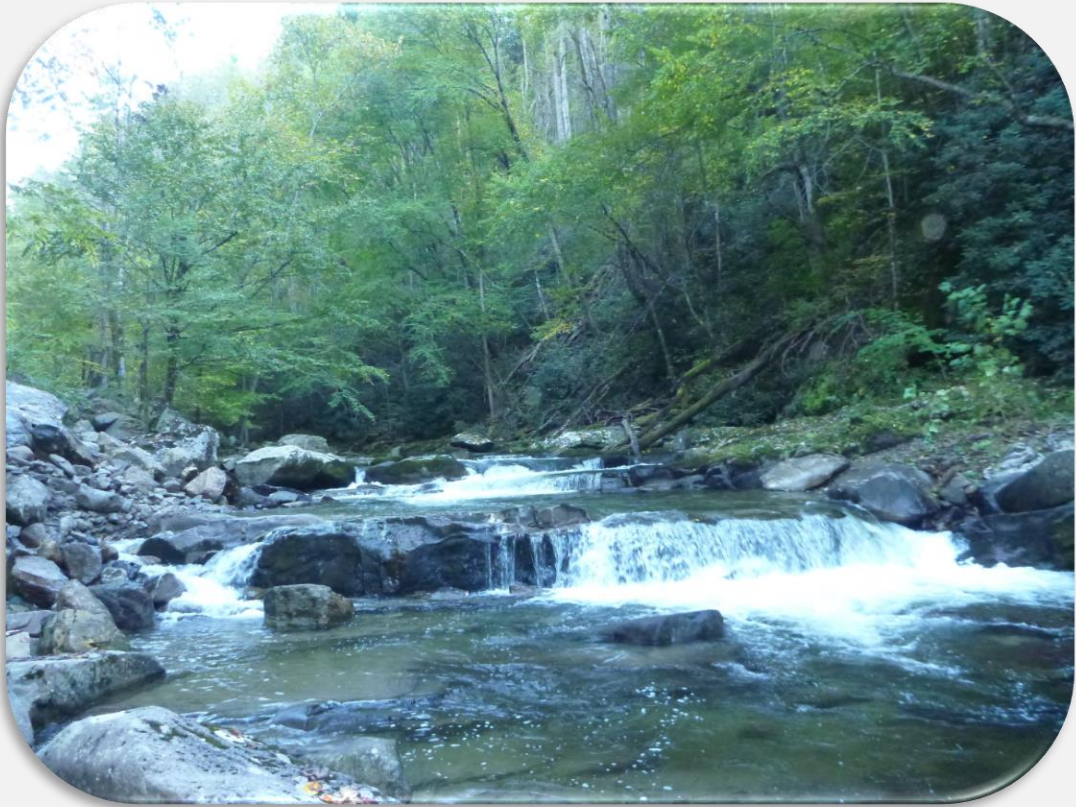
FISH MIGRATION STATUS CHECK

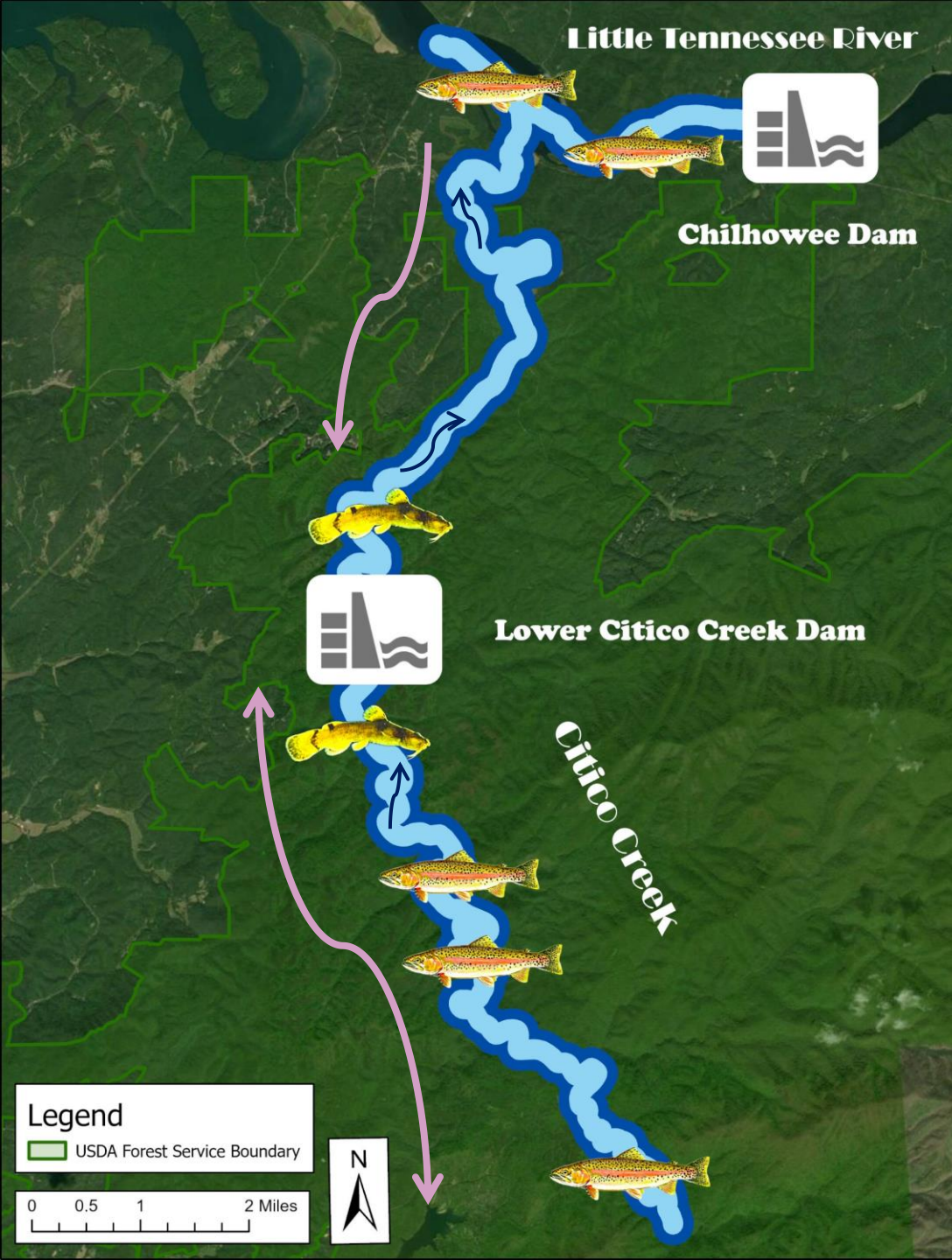


UPPER CITICO CREEK DAM REMOVAL



2015
→





**FISH MIGRATION
STATUS CHECK**

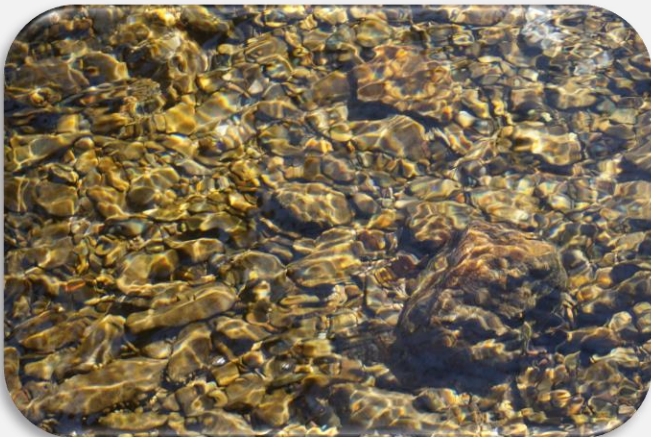


LOWER CITICO CREEK DAM



RESEARCH SHOULD THIS DAM BE REMOVED?

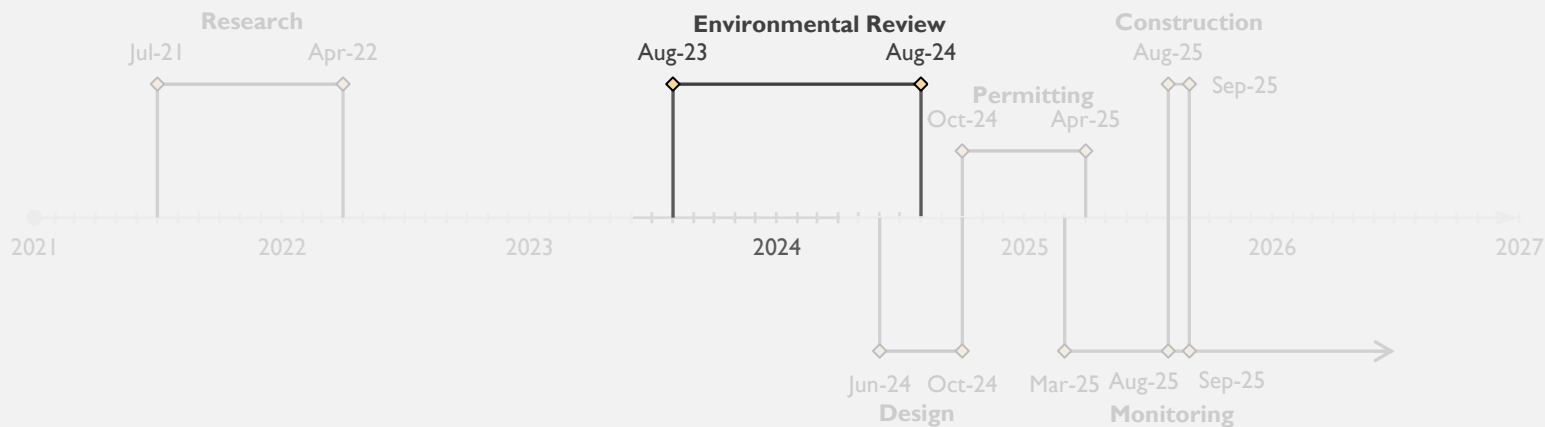
- Location in critical habitat
- Protecting upstream populations of yellowfin madtom





ENVIRONMENTAL REVIEW

WHAT ARE THE ENVIRONMENTAL IMPACTS?

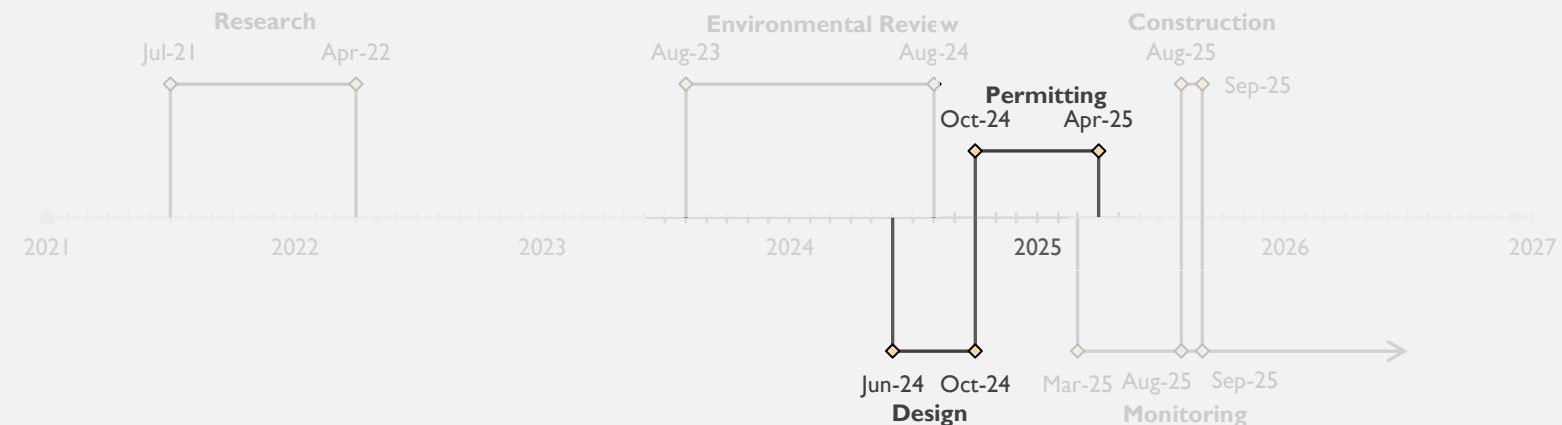
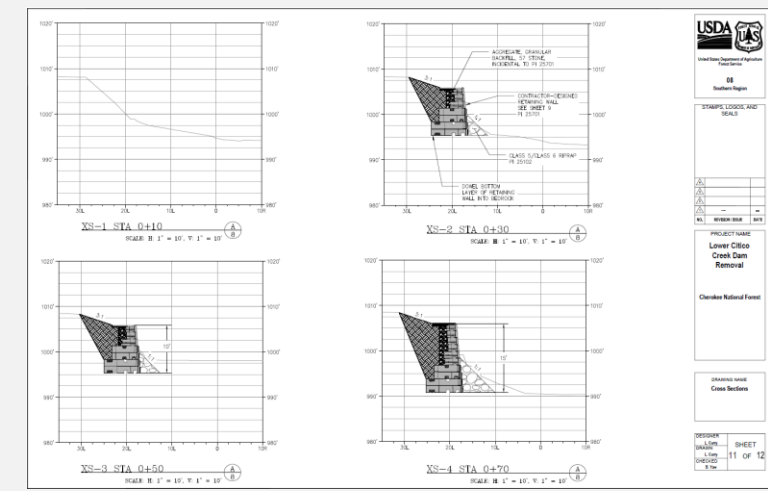
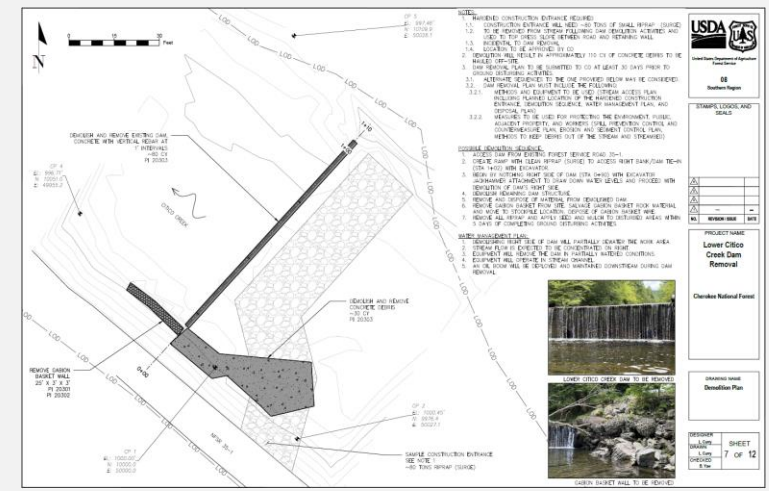




US Army Corps of Engineers®

DESIGN & PERMITTING BEHIND THE SCENES

- Design
 - Access
 - Dam and debris removal
 - Retaining wall construction
- Permitting
 - TDEC – Aquatic Resource Alteration Permit
 - USACE – Nationwide Permit 13 (Bank Stabilization)
Nationwide Permit 53 (Removal of Low-Head Dams)





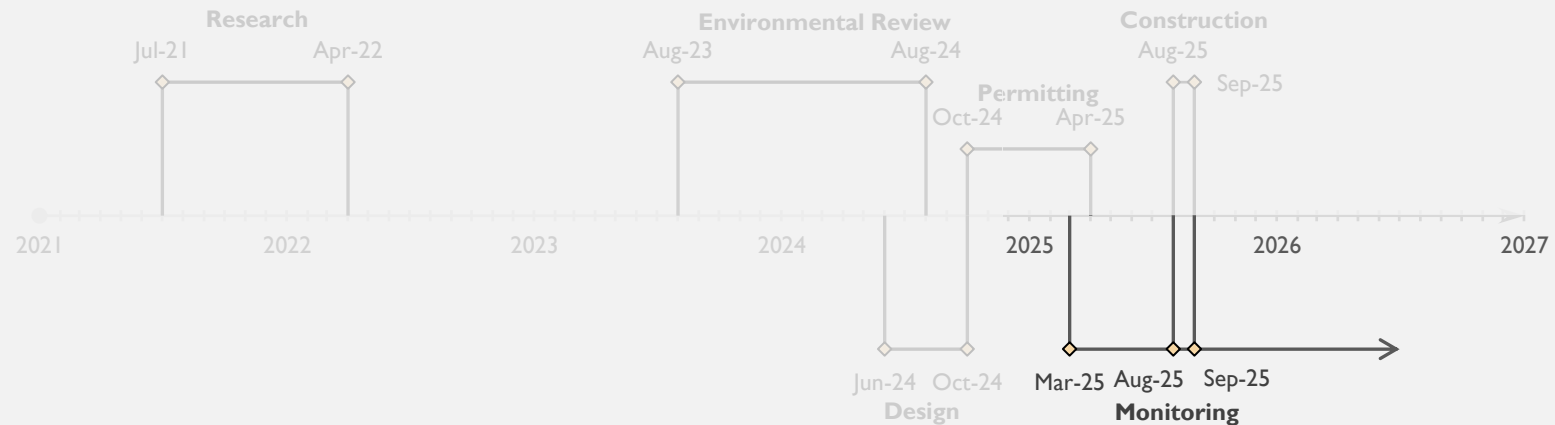
**TALLASSEE
FUND**



MONITORING

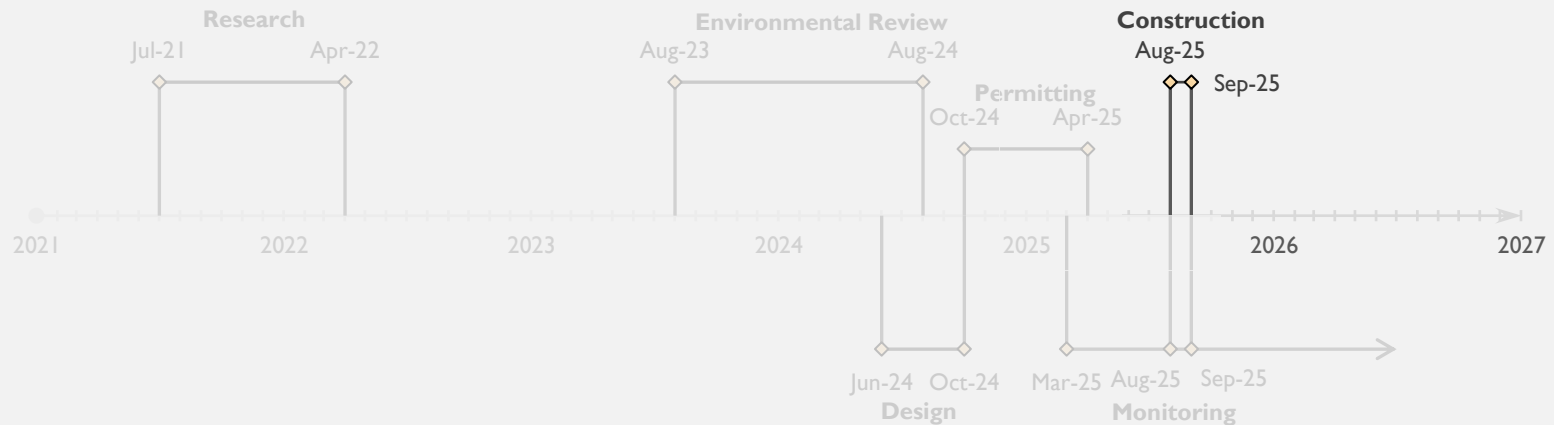
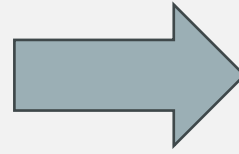
WHAT HAPPENS WHEN YOU REMOVE A DAM?

- Pre- and Post-construction Monitoring
 - Changes in physical habitat and stream channel geomorphology
 - Fish Migration
 - Fish Population
 - Mussel Surveys

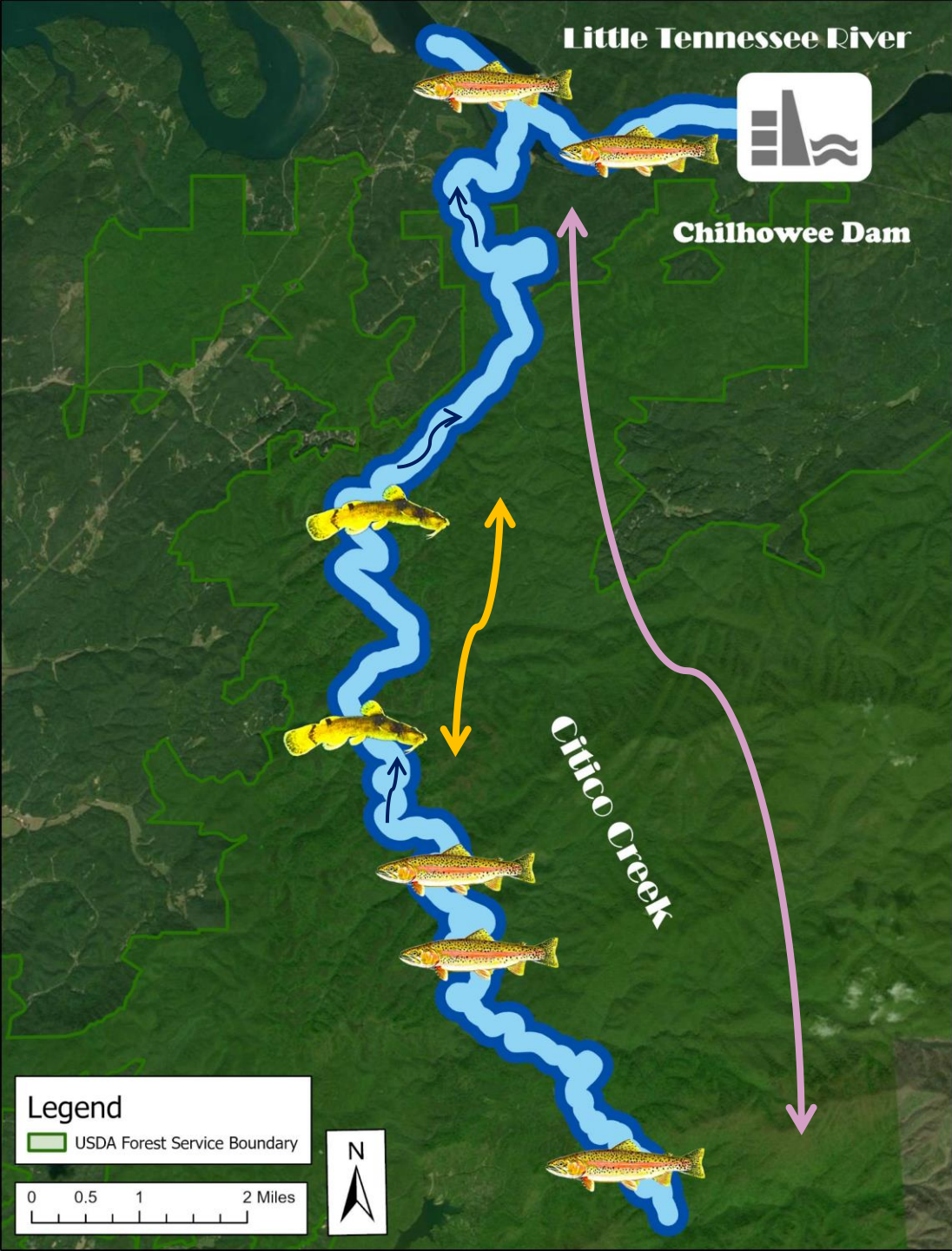




CONSTRUCTION THE EXCITING PART







**FISH MIGRATION
STATUS CHECK**



THANK YOU TO EVERYONE INVOLVED



Conservation Fisheries



The Nature Conservancy



THE UNIVERSITY OF TENNESSEE KNOXVILLE



TALLASSEE FUND



US Army Corps of Engineers

PATH FORWARD

